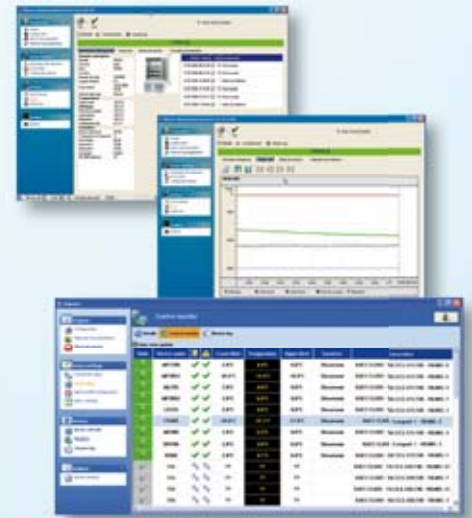


DMN - Dometic Monitoring Network

DMN is a universal software to gather, display and monitor temperature data (graphically illustrated) with an activity history for all appliance components. In case of power failure, temperature alarms, door opening alarms, etc., the software forwards the alarm messages directly via mail or SMS to the person in charge.

A connection to a third-party appliance is possible via network technology.



DCU - Dometic Communication Unit

The DCU, newly developed, notes all operating conditions and passes them through to a central data base – via local network (RS485 Bus, Ethernet LAN/WLAN, TCP/IP), on which devices are connected. The DCU offers a range of possibilities like:

- Interface connection of Dometic appliances to existent network
- The DCU offers direct connection to the Ethernet, even wireless, to the serial BUS, as well as to the central building control system
- Digital IN/OUT
- The integrated USB port allows to write stored data to an external memory stick
- Recording and storage of relevant data of the appliance
- The battery buffer allows continuous recording even in case of a power failure. Data are recorded and secured in the internal DCU memory (absolute timestamp included). The data can be illustrated in the DMN without time gaps
- Possibility of connection of several additional self-sufficient temperature sensors (up to 4 PT100 & 2 PT1000)
- The DCU replaces the paper temperature recorder
- The DCU also works with Dometic electronics which were applied until October 08
- The DCU, with its own power supply can be used for data collection of several sensors. All data are recorded and saved in the data base of the DMN and are available for analysing purposes at any time
- Possibility of connection of actors (4 to 20 milliA out)
- Thanks to the internal memory of the DCU, the DMN allows to diagnose breakdowns even on units that are never connected to a PC or network

